

Environmental statement

Epwin is a vertically integrated manufacturer and supplier of maintenance-free building products to the refurbishment, social housing, new build, education and urban regeneration sectors via trade, retail and commercial channels.

All Group companies are committed to controlling and minimising their environmental impact and to working in a sustainable manner.

We will ensure compliance with all relevant environmental legislation and follow a programme of continual improvement, by the operation of an Environmental Management System to the requirements of BS EN ISO 14001:2004.



Our policy is implemented by all employees and our commitment involves:

- Reduction of waste levels from company processes, and where practical, recycling waste materials. All scrap material levels are monitored and reduced in accordance with quality procedures and strict targets.
- Monitoring energy use and energy efficiency, including the development and enhancement through a continual programme of improvement.
- Monitoring fuel use and promoting fuel efficiency, through technology, careful planning and careful driving.
- Provision of detailed environmental training, instruction and procedures relevant to their task and responsibilities.
- Ensuring our activities have minimal impact on local communities and do not create a nuisance to our neighbours.
- Comprehensive supplier selection process to ensure we only work with companies who share our environmental commitment.
- A continual programme of improvement and annually reviewed objectives and targets, facilitates the successful operation of this policy in line with the latest Government guidelines.

Paul M. Hazel
Group Managing Director

ment Recycling Natural resources Whole life costings Environmental sustainability Energy efficiency Sustainability
 :tion Recycled PVC-U Economic sustainability Natural resources In-house recycling performance Natural resource
 ng Energy efficiency Environmental statement Lifetime Sustainability commitment whole life costings In-house
 al resources In-house recycling Environmental sustainability Natural resources Environmental sustainability Pe
 sustainable construction Environmental sustainability Performance Energy efficiency in-house recycling Sustainab
 ic sustainability Natural Resources Economic Sustainability Natural resources enerGy efficiency Whole life cost
 erformance Lifetime sustainability commitment Recycled PVC-U Sustainability Natural resources Sustainability
 eycled PVC-U Energy efficiency Whole life costings Environmental sustainability Social sustainability Performa
 rgy efficiency Natural resources Performance Energy efficiency Natural resources Sustainability Recycling Econo
 commitment Economic sustainability Sustainable construction Whole life costings performance Energy efficien

Your sustainable partner

Epwin Group

Manor Park Business Centre,
Mackenzie Way,
Cheltenham,
Gloucestershire,
GL51 9TX

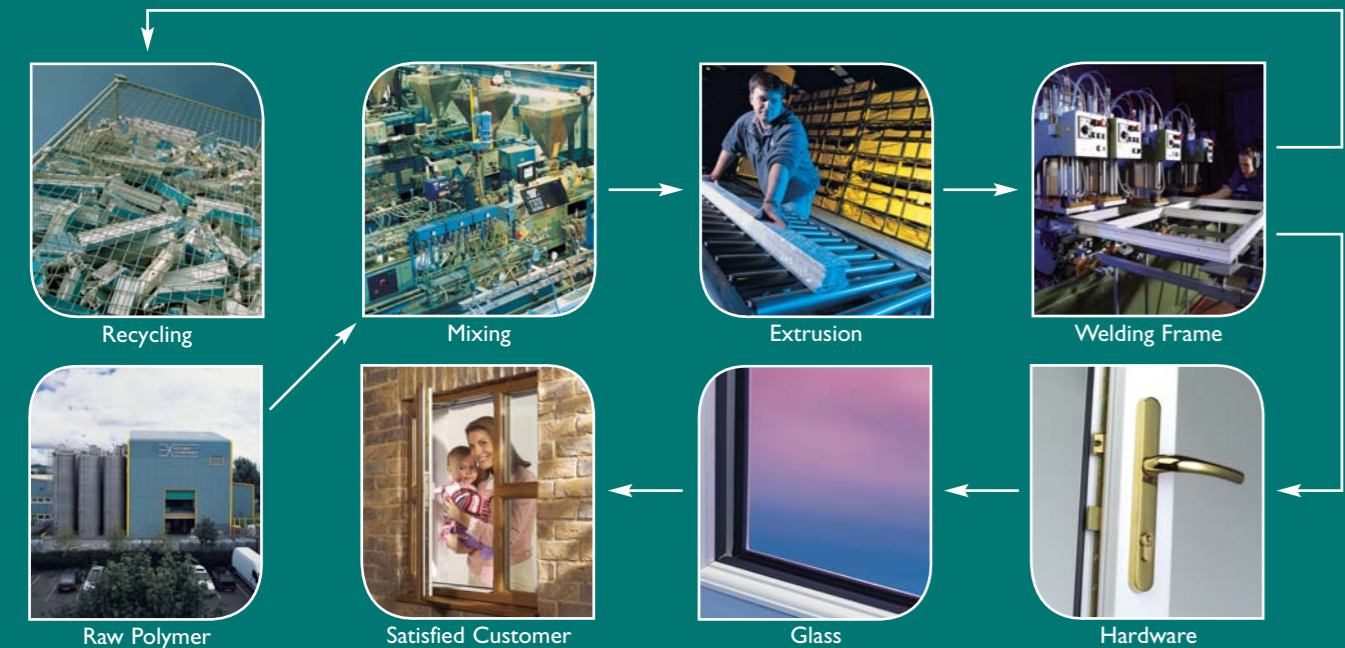
T: 01242 243444
F: 01242 260521
info@epwin.co.uk
www.epwin.co.uk

Your sustainable partner

Epwin is a vertically integrated manufacturer and supplier of maintenance-free building products to the refurbishment, social housing, new build, education and urban regeneration sectors via trade, retail and commercial channels. The Group is the second largest manufacturer of PVC-U and PVC-UE extrusions in the UK.

Since introducing PVC-U windows to the UK in 1976, Epwin has grown to operate over 30 separate brands with activities covering extrusion, manufacturing, installation and recycling.

With sites across the UK, the Group now employs in excess of 2200 people.



In-house recycling



Epwin Group has its own in-house recycling facility, Dekura, which specialises in the collection and recycling of PVC-U. It works closely alongside its sister company Polypro which re-processes the recycled material.

Epwin operates a major recycling programme across the British Isles, focusing on the collection and processing of PVC-U waste, assisting the industry to comply with the latest legislation concerning the environment and recycling.

We have invested several million pounds to create the UK's largest and most advanced PVC-U recycling plant. Our equipment and our experience maximise the amount of material available for reuse and minimise the environmental impact of the process.

After the collection cages are emptied the material is cleaned, colour and shape sorted, quality graded and finally processed into 8.0mm chip granulate, 800 m micronised powder or compounded pellets in various colours - white, brown or jazz depending on its eventual use. Thanks to innovations such as a five stage metal removal system and a rubber separation process, our material is the highest quality of its type available in the UK.

Once re-processed the materials can be re-used in the extrusion formula to produce a range of building products, for example, cable trunking.



Lifetime sustainability commitment

Epwin is a vertically integrated manufacturer and supplier of maintenance-free building products to the refurbishment, social housing, new build, education and urban regeneration sectors via trade, retail and commercial channels.

All Group companies are committed to the integration of economic, social and environmental factors in all elements of the business, from raw materials and manufacturing to installation and recycling.

Epwin supports Government and European initiatives to improve the sustainability of building materials and encourages its customers to take up end of life recycling opportunities.

Epwin commits that all white PVC-U products manufactured by any Group company will be recycled at the end of their life, providing the products are manufactured by a Group company, have not been painted or surface coated in any way and are delivered to a recycling point nominated by Epwin.

Group extruded PVC-U can be fully recycled back into the core of other PVC-U building products - this closed loop is fully sustainable.

Paul M. Hazel
Group Managing Director

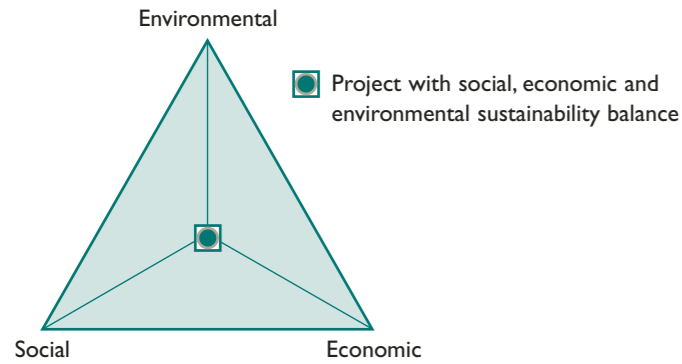


- Integration of economic, social and environmental factors.
- Provision of comprehensive training and support to all employees and customers.
- Closed loop recycling. (see our environmental statement)
- Support of all Government and European initiatives.
- A continual programme of improvement and review of objectives and processes in-line with latest guidelines.
- Excellent whole life costings and BRE reference life of 35 years on PVC-U.

Integrating sustainable solutions

Sustainability is often referred to as the triple bottom line, because it involves the integration of economic, social and environmental factors.

The triple bottom line of sustainability



- Economic sustainability concerns the increase of profitability by making more efficient use of resources, whether human, natural or energy.
- Social sustainability recognises the needs of everyone affected by a project within the supply chain, and importantly the end-users and local communities.
- Environmental sustainability considers the protection of the environment from the impact of the emissions and waste, and the careful use of natural resources, reducing our burden on the biosphere.

Because the government is the building industry's single largest UK client, responsible for over 40% of UK construction, stringent targets have been set for all public sectors working with suppliers having to meet these requirements in order to win contracts.



Sustainable construction

Sustainability has long been integral to the Government's initiatives in the social housing and new build sectors, to improve living conditions for all residents.

In 2000, the Government set out its commitment to sustainable construction with the publication of the document 'Building a better quality of life', which clearly outlined a strategy for more sustainable construction in the UK.

This document defined sustainable construction by its outcomes, and stated that the construction industry across the UK could contribute to the achievement of sustainable development by:

- Being more profitable and competitive.
- Delivering buildings and structures that provide greater satisfaction, well being and value to customers and users.
- Respecting and treating stakeholders more fairly.
- Enhancing and better protecting the natural environment.
- Minimising the consumption of energy and natural resources.

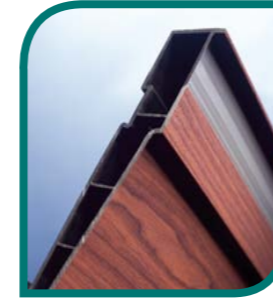
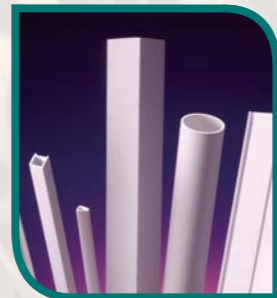
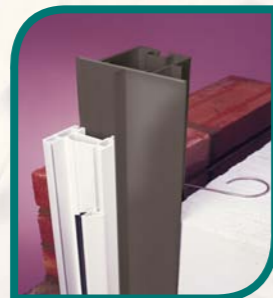
Performance

As an experienced supplier to the commercial sector Epwin is committed to ensuring all elements of its business are in line with the principles of sustainability, evolving its structure to provide complete project management for both new build and refurbishment environments.

The process for the supply of products for sustainable construction involves all materials that are utilised being manufactured by the most environmentally friendly methods with minimum impact upon the environment and local communities, it may even use recycled material in its production.

We understand that clients wish to use materials and systems that have minimal impact on both the environment and local communities. The efficient use of energy and materials is essential, as are products offering excellent whole life costings that can be sustained in use for longer periods of time with negligible maintenance requirements.

The Building Research Establishment (BRE) Scoping Study 'Service Life' gives PVC-U a reference service life of 35 years. Impressively PVC-U profiles manufactured in accordance with BS 7413 are expected to last in excess of 40 years, according to the British Standards Institute (BSi).



Lifecycle savings

Research has shown that the total capital and maintenance costs for a softwood window will be 33% more than for a PVC-U window. PVC-U makes an ideal low maintenance solution. This, combined with aesthetics and high security features, is why PVC-U accounts for some 90% of the replacement window market in the UK and why it is used either wholly or as a composite material in a range of building products.

Epwin is committed to the environment and offering sustainable whole life costings for improved communities throughout every stage from production to site, through both its manufacturing processes and its products. PVC-U is a multi purpose material. Not only can it be manufactured safely but it is easy to recycle and is environmentally inert.

Research studies have shown that PVC-U can often be recycled up to ten times and materials such as glass and steel in the window unit can also be successfully recovered. The PVC-U industry as a whole has made a voluntary commitment to recycling. On a European level this involved a commitment, which was achieved, to recycle 50% of collectable waste by 2005 (VINYL 2010).

Our network of companies and customers operate a recycling programme and any old products or production offcuts can be re-processed for anything from underground pipes to electrical cable trunking.